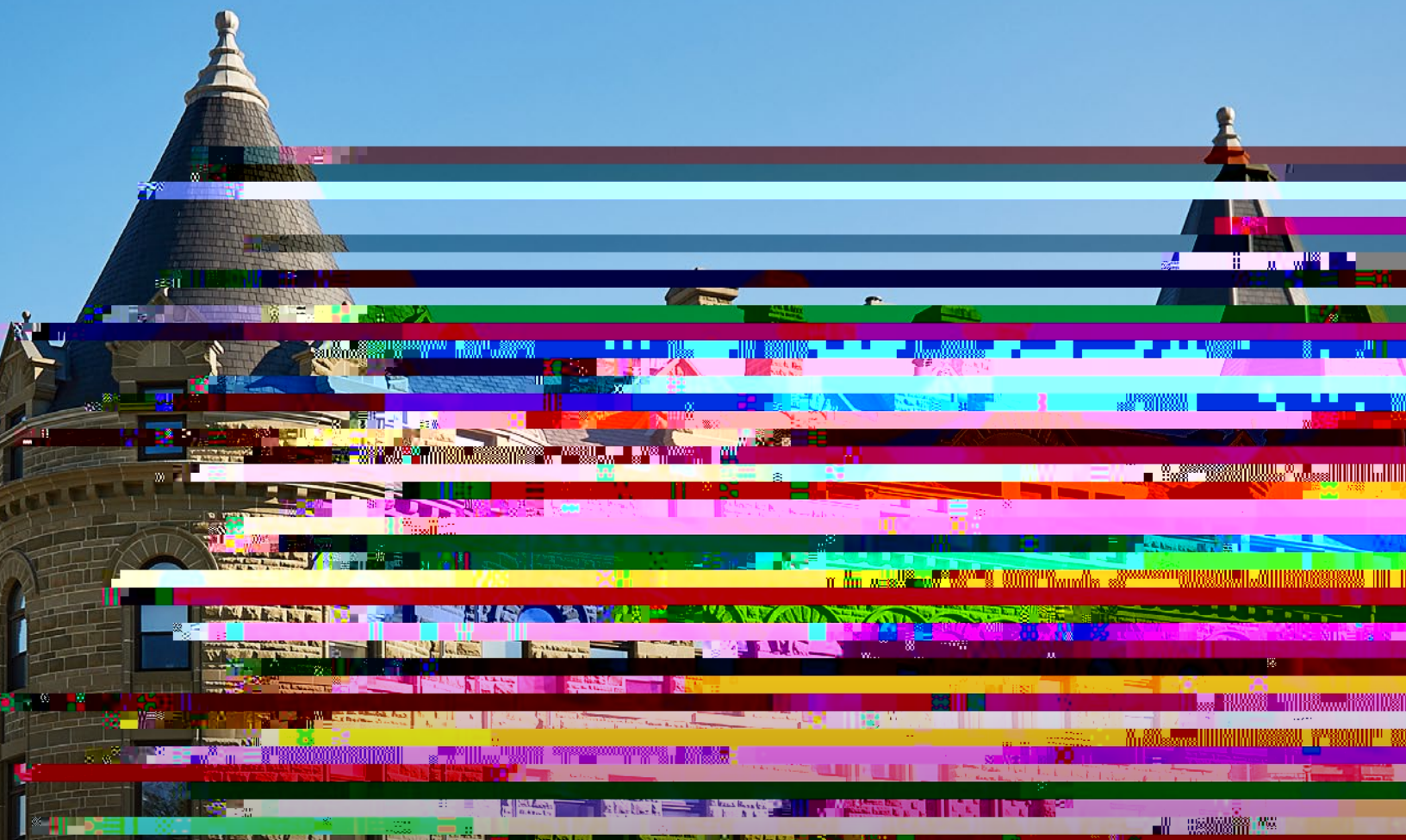


President's Report

To The University of Winnipeg
Board of Regents

2021-2022





President's Report

to The University of Winnipeg Board of Regents

Academic Excellence and Renewal	1
Student Experience and Success	5
Indigenization	9
Research Excellence, Knowledge Mobilization and Impact	13
Financial and Institutional Resilience	17
2020-2021 Highlights	21
COVID-19 Response	22

Message from the President

Throughout the past year and despite the disruptions caused by the COVID-19 pandemic, The University of Winnipeg continues to demonstrate its resilience and collective commitments to student success, academic and research excellence, Indigenousation, financial health, and sustainability.

This year's Annual Report provides plentiful evidence of these commitments including documenting an increase in overall enrollment, the launch of new academic programs including in Indigenous Languages, the growth in funding for world-class research programs, and a continued focus on financial stability. Also highlighted are exciting achievements and accolades received by members of our community, providing evidence that The University of Winnipeg truly is a place where individuals can learn, grow, and belong.

As we emerge from the shadow of the pandemic and prepare to fully reopen in



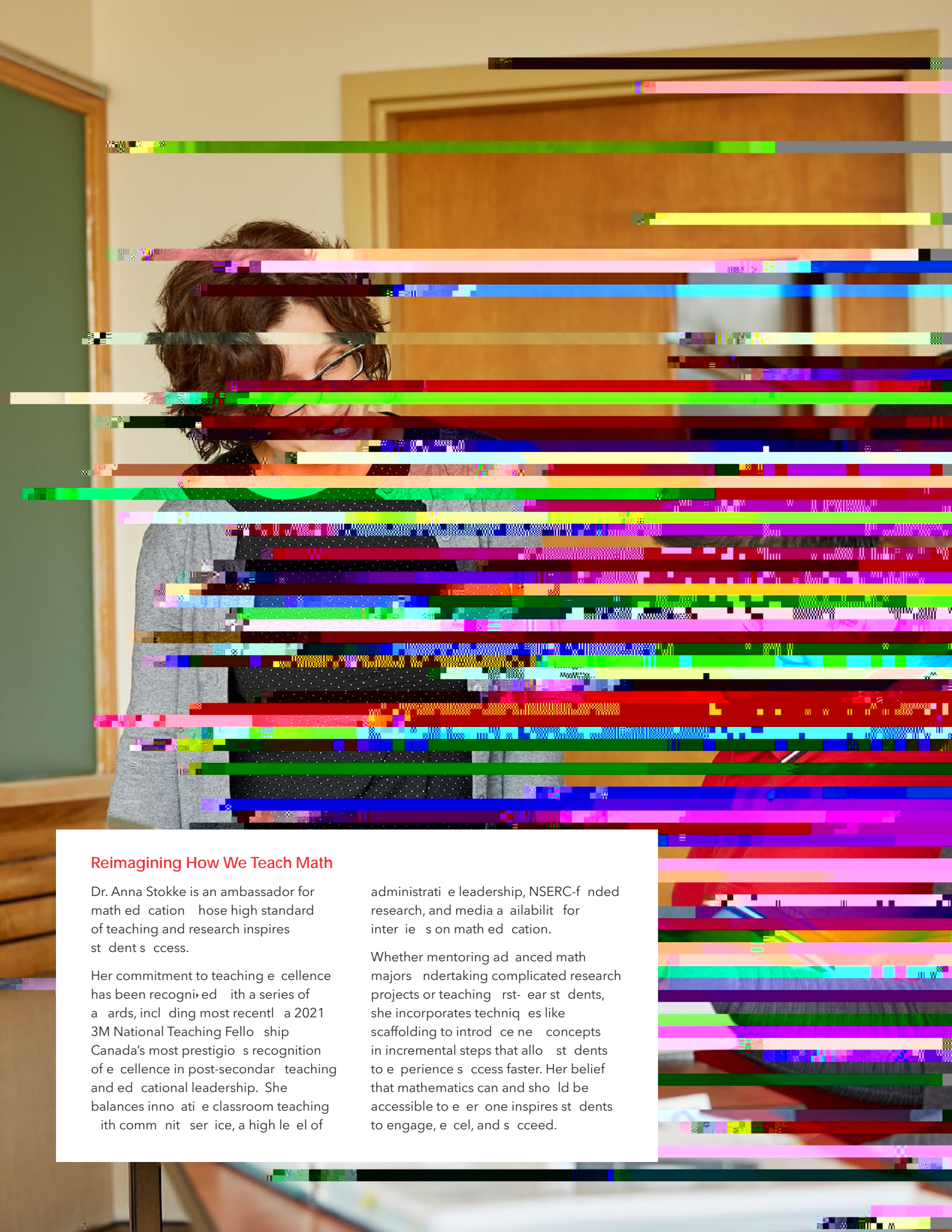
Strategic Direction: Academic Excellence and Renewal

COVID-19 continued to present UWinnipeg with a series of challenges throughout the 2021-22 academic year. Despite these challenges, UWinnipeg faculty succeeded at providing high-quality educational experiences, both in-person and online. Enrollment remains stable, and we continue to attract new students from around the world. Nearly 1600 international students were registered in the fall of 2021.

In new programming, the 2021 academic year also introduced a new Bachelor of Arts in Indigenous Languages, with its first cohort of three students registering in the fall term. In the past year, PACE partnered with Supply Chain Canada to allow graduates of the Supply Chain Management Program to be eligible for advanced standing in earning their designation as Supply Chain Management Professionals.

Work continues in equity, diversity and inclusion under the NSERC grant and Dimensions pilot project. In the winter of 2022, Human Resources conducted an equity survey to establish a more accurate understanding of the makeup of UWinnipeg's faculty and staff.

Above: Josh Sain (BSc'21) was among 20 Canadians chosen as inaugural McCall MacBain Scholars. He credits his undergraduate education at UWinnipeg with preparing him for success. One of the most important things I encountered at UWinnipeg was a strong group of Indigenous science students pursuing their dreams and taking on graduate programs.



Reimagining How We Teach Math

Dr. Anna Stokke is an ambassador for math education whose high standard of teaching and research inspires student success.

Her commitment to teaching excellence has been recognized with a series of awards, including most recently a 2021 3M National Teaching Fellowship, Canada's most prestigious recognition of excellence in post-secondary teaching and educational leadership. She balances innovative classroom teaching with commitment to service, a high level of

administrative leadership, NSERC-funded research, and media availability for interconnections in math education.

Whether mentoring advanced math majors undertaking complicated research projects or teaching first-year students, she incorporates techniques like scaffolding to introduce new concepts in incremental steps that allow students to experience success faster. Her belief that mathematics can and should be accessible to everyone inspires students to engage, excel, and succeed.

Undergraduate and Graduate Headcount¹

9599

Undergraduate/Graduate Students²

85.6% Domestic Students
96.3% from within Manitoba

14.4% International Students

74.4% Under the age of 25

62.4% Female

24.6% Part-time

9.9% Indigenous

3.0% Graduate Students
14 Programs
4 Joint Master's Programs
281 Students
88 Students Graduated

Program Headcounts³

1524

PACE

85

ELP

365

Collegiate

2021 Top 4 Countries Headcount:

India.....745
Nigeria.....123

¹ Source: UWinnipeg's Student Information System. Data includes undergraduate and graduate students who are registered at UWinnipeg for the Fall Term (September - December) as of November 1.

² Source: UWinnipeg's Student Information System. Students have the opportunity to self-identify their gender and/or their Indigenous ancestry on their application to UWinnipeg. Part-time statistics are defined as a student who is registered for less than 9 credit hours in a term. Age is calculated based on the student's birth year as indicated on their application form. Data is as of November 1. Domestic students from Manitoba references students who graduated from a secondary institution in Manitoba.

³ Source: PACE and Collegiate student information systems

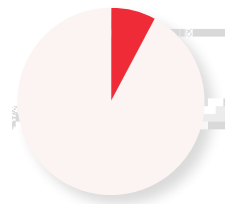
⁴ Source: UWinnipeg's Student Information System (SIS). Data is as of November 1.



Identify as a Women



Identify as Indigenous



Identify as a Person With a Disability



Identify as a Member of a Racialized Community

Proportion of Academic Staff
Identifying as a Women (50%), Indigenous (5%), Person with a Disability (5%), and Member of a Racialized Community (10%)



Strategic Direction: Student Experience and Success

The 2021-22 academic school year saw students returning to campus in the fall and spring/summer terms. COVID-19 vaccine and mask mandates were implemented in September 2021.

In late 2021, UWinnipeg administered its Survey of Graduated Students to former students who had graduated in 2019. Graduates reported positive outcomes, with only 4% experiencing unemployment at the time of the survey. In addition, graduates found that their education was helpful in acquiring employment, with 81% reporting their degrees were either helpful or somewhat helpful in getting their job.

Above: Students Mikaila Collins and Meagan Nenka had the opportunity to share literacy, numeracy, and wellness activities with children and caregivers in Northern Manitoba in 2021. Along with professors Dr. Sheri-Lynn Skarlick and Dr. Yvonne Viviana, they travelled ten hours north of Winnipeg to the Misipistik and Tataskewiak Cree Nations to share To Be Manitoba resources and learn about Indigenous and northern culture.

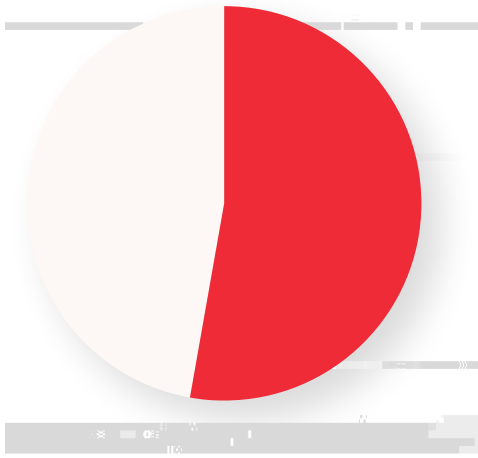
74%
of students
reported that they
enjoyed their
experience in 2020,
compared to 2021.³

46%
of students
reported that they
enjoyed their
experience in 2014,
compared to 2021.²



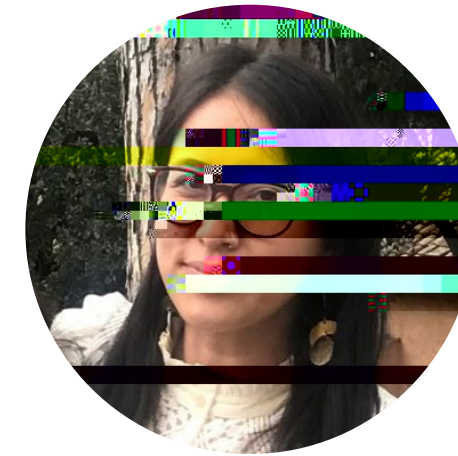
86%
of students
reported that they
enjoyed their
experience in 2014,
compared to 2021.³

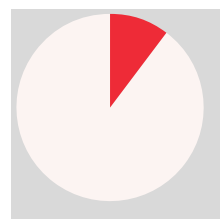




Experiential learning opportunities include:

- › co-op
- › practicum
- › internship
- › service learning
- › laboratory or field work.



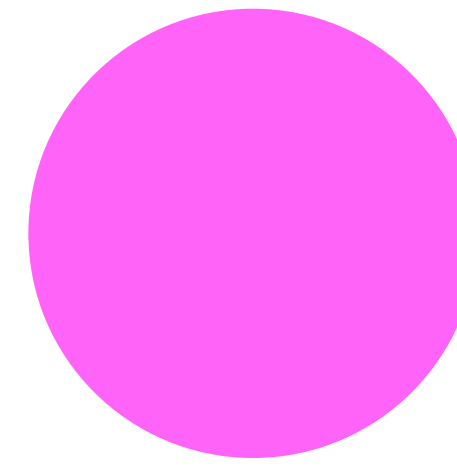


Indigenous Course Requirement (ICR)¹

St dents m st take at least 3 credit ho rs from a list of co rses appro ed b Senate. The ma choose from a n mber of co rses in hich the greater part of the content is local Indigeno s material deri ed from or based on an anal sis of the c lt res, lang ages, histor , a s of kno ing or contemporar realit of the Indigeno s peoples of North America.

Fac lty of Arts	59 Appro ed Co rses
Fac lty of Science	9 Appro ed Co rses
B siness and Economics	1 Appro ed Co rse
Ed cation	1 Appro ed Co rse

4,999 students have fulfilled their ICR since 2016





Dr. Yadira Chinique de Armas (Anthropology)
 Dr. Chinique de Armas and recent graduate Kaitlin Hanson (BSc, Hons 2021) are part of a team of researchers developing a new, innovative approach to understanding ancient infant feeding behavior. While studying the burials of Bacalar, a prehistoric Indigenous population from Mexico, the research team developed and applied a novel approach that combines different isotope systems and tissue types, providing a much more detailed and precise reconstruction of ancient infant feeding practices such as exclusive breastfeeding, the introduction of weaning foods, and the timing of the overall weaning process.

This research confirmed the ability of multi-proxy approaches, such as combining different isotope systems and tissues, to reconstruct breastfeeding and weaning practices in archaeology with improved resolution. We also present novel stable isotope data derived from deciduous teeth enamel which demonstrates that changes in diet can be detected in teeth formed during early infancy.



Dr. Caleb Hasler
 UWinnipeg biologist and Chancellor's Research Chair
 Dr. Caleb Hasler has partnered with Derek Kroeker and Eric Mullen at the Province of Manitoba's Agriculture and Resource Development Division, Ryan Saffron at the University of Manitoba, Dr. Kenneth Jeffries at the University of Carleton, and Dr. Steve Cooke at Carleton University to investigate how recreational fishing activities influence lake trout populations in Manitoba.

The northern populations are doing better overall and there are many opportunities to catch trophy lake trout. In the southeast, the populations are less productive and recreational angling opportunities may be suffering. Generally, the fish are smaller, and more fishing effort is needed to capture lake trout.



Strategic Direction: Financial and Institutional Resilience

UWinnipeg introduced a modest 3.75% tuition increase for the 2021-22 academic year. This year's budget also included a 1.8% reduction in the base operating grant from the provincial government. Substantial revenue was lost from campus operations due to COVID-19 -- most notably in ancillary services like housing, parking, printing, and recreational space rental.

PACE remains a source of funding stability, ending the pandemic, with contributions of \$3.8 million. The PACE AnX Centre also celebrated its grand opening in December 2021.

The Campus Sustainability Office released its 2020-21 annual report, which reflected the changes in resource selection when the campus closed due to the pandemic. The expectation is that this data will be used to inform new goals related to behavior change on campus.

Above: The Association for the Advancement of Sustainability in Higher Education (AASHE) awarded University of Winnipeg Food Services the highest ranking in Canada (this is the sixth year in a row) and the second highest ranking in North America for supporting sustainable food systems through their purchasing practices for 2021. Team members Executive Chef Jessica Young (pictured), COO Ian Vickers, and Executive Manager of Operations Kristen Godbolt have made a long-term commitment to providing delicious and sustainable food on campus and beyond.

Year in Review

2021-2022

On the Move

- › Dr. Todd Mondor was appointed Tenth UWinnipeg President. Dr. Mondor's term started April 1, 2022 and runs through June 30th, 2027. Prior to joining UWinnipeg, Dr. Mondor spent more than two decades in multiple academic and administrative roles at the University of Manitoba.
- › Julia Peemoeller was appointed acting Vice-President, Finance and Administration.
- › Dr. Tracy Whalen was named Acting Associate Dean of Arts for a one-year period beginning July 1, 2021.
- › Dr. Gina Silvestre was appointed Director of the Institute of Urban Studies.

First-Evers

- › The University of Winnipeg recognized the first National Day for Truth and Reconciliation as a national holiday by lighting the UWinnipeg campus in orange from September 27-30.

New and Renewed Partnerships

- › The UWinnipeg continues to explore and to identify funding in support of the Library renovations.

Improving Service

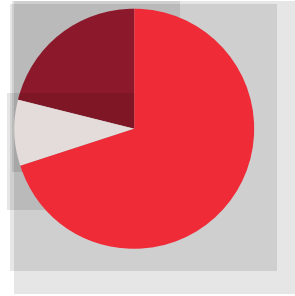
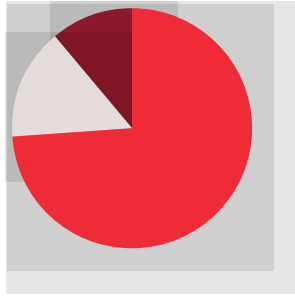
- › Human Resources launched the Remote Work Guidelines.
- › UWinnipeg has been offering staff and faculty open sessions on managing stress as people gradually return to work on campus.

Recognitions

- › University Food Services ranked number one in Canada, and number two in North America, in the sustainable campus food category in 2021 by the Association for the Advancement of Sustainability in Higher Education (AASHE).
- › After 13 years, The University of Winnipeg Collegiate's Model School celebrated passing 100 graduates at the June 2021

UWinnipeg Faculty and Staff COVID-19 Safety Survey¹

Support a Mask Mandate



SO

